

S8301340 [Seat Swivel]

Instruction Guide

1. Remove seat top and seat plate bracket from the suspension
2. Remove seat plate bracket from the seat top



3. Bolt swivel to the rails on the suspension using (4) 5/16" x 1/2" bolts and (4) nuts



4. To bolt these together you may have to use the swivel action on the swivel and/or move the rails backwards and forwards to insert the bolt, once all are started you may tighten completely
5. Bolt plate to top of swivel using (2) 1/2" bell washers together, as pictured with 5/16" x 1-3/4" bolt *per hole*

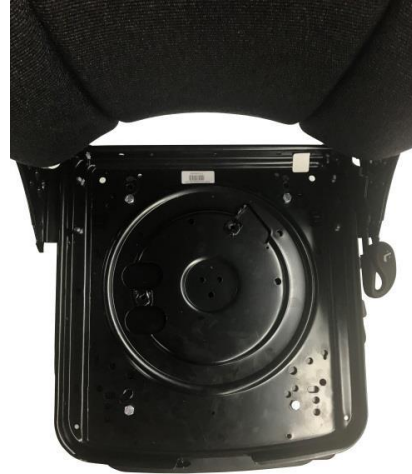


S8301340 [Seat Swivel]

Instruction Guide



6. Bolt seat to seat plate using (2) washers as spacers between seat and seat plate and 5/16" x 1/2" bolt *per hole*



7. Use screws to reattach the seat bottom

